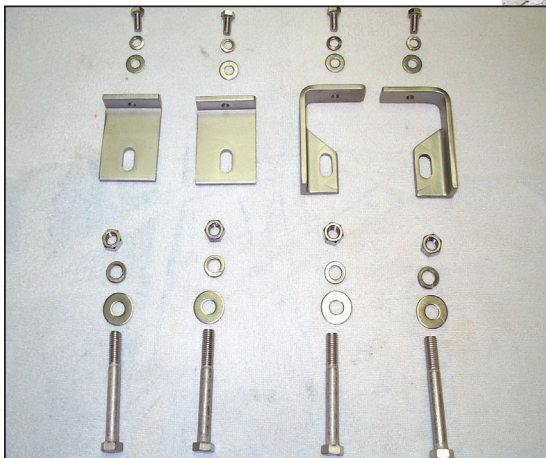
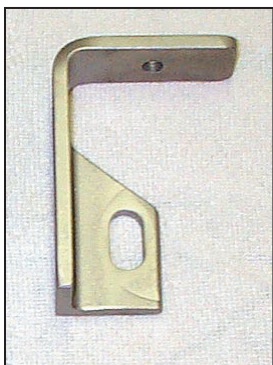


Installation Instructions



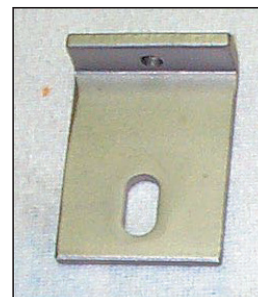
This is the bracket hardware included with the kit that you will need for installation.



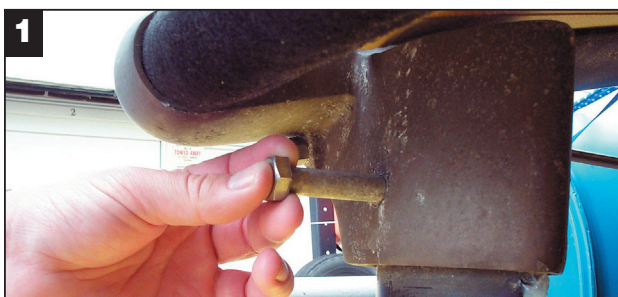
Port-side front mounting bracket



Starboard front mounting bracket



Universal Rear Mounting bracket. (This mounting bracket can be used for either Port or Starboard Rear)



Front Mounting Bracket Installation:

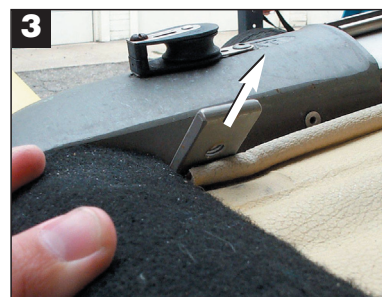
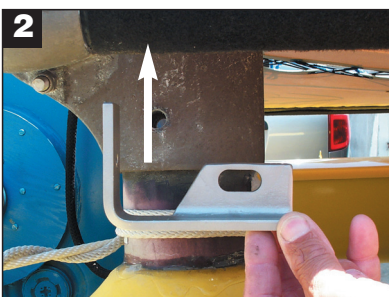
Step 1) Starting with the Portside (left), front of the Hobie, remove the existing 1/2 inch bolt connecting trampoline frame to pontoon.

Step 2, 3, 4,) Then install Port-side front mounting bracket as shown in figure 2, so that the top part slides *up* between the trampoline and frame, (see arrow in figures 2 & 3). The bracket should end up in the position as shown in figure 4, and the bracket height should be more or less flush with the padded side of the frame. The bracket has an elongated slot so that it can be slid higher or lower as needed.

Step 5) Insert the longer 1/2 inch bolt w/ flat washer and nut w/ lock washers, (included with your kit).

Step 6) After adjusting the height of the mounting bracket to be flush, (as indicated in figure 4), tighten the bracket to the trampoline frame.

Repeat steps 1-6 for the Starboard/Right front mounting bracket.



HINT: Do not tighten the four brackets too much at first. This is so you can loosen them again easily to accommodate the Wing-Seat Arm installation if any adjustment is needed.



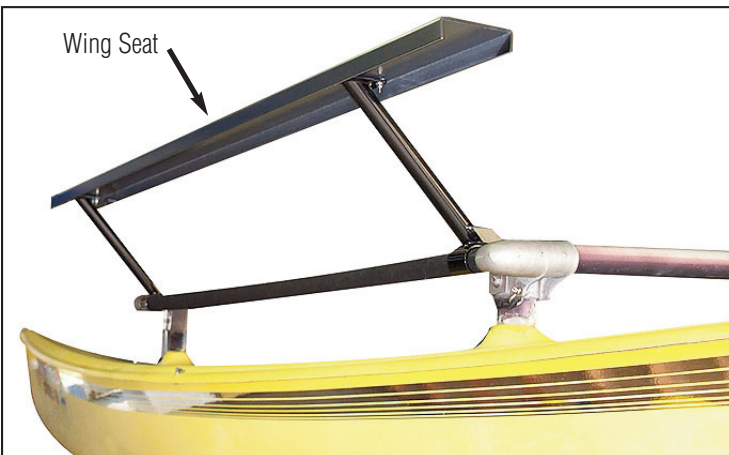
Rear Mounting Bracket Installation:

Step 1) After removing the existing 1/2 inch bolt, install the rear mounting bracket to the Port-side rear of the trampoline frame using the longer bolt w/ nut and washers included with the kit. (**Please note:** Unlike the front mounting brackets, both rear mounting brackets are interchangeable, and will fit the port-side rear or the starboard-side rear of the trampoline frame.)

Step 2) The bracket should end up in the position as shown in figure 2. The bracket height should be more or less flush with the padded side of the frame, (see arrow). The rear mounting bracket has an elongated slot so that it can be slid higher or lower as needed. **Repeat for Starboard-side rear.**

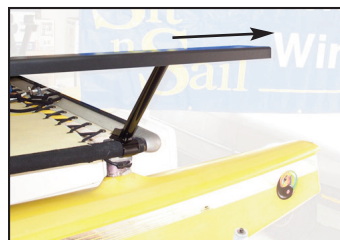


HINT: Do not tighten the four brackets too much at first. This is so you can loosen them again easily to accommodate the Wing-Seat Arm installation if any adjustment is needed.

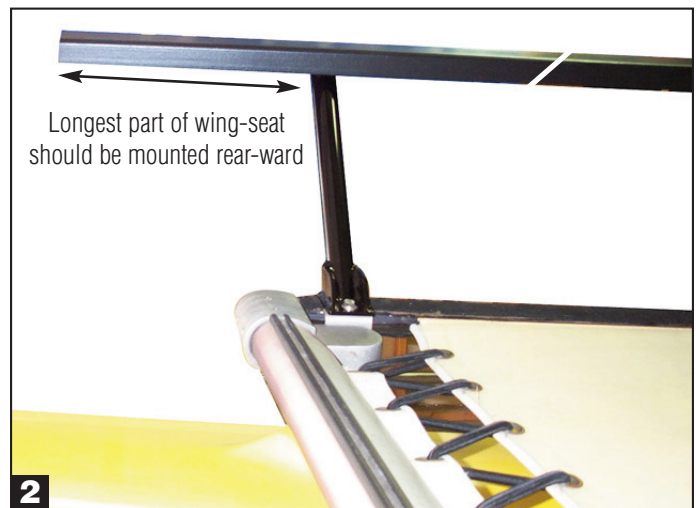


Wing-Seat installation:

Step 1) Using the supplied nuts, bolts and washers, attach the four Wing-Seat Arms to the fiberglass wing seats as shown in figure 1.



Step 2) For each side of the boat, make sure that the longer part of the wing-seat extends toward the rear of the Hobie 16. (See figure two). This is so the sailor has more room to sit rearward on the wing when sailing. This will help to raise the leeward hull tip to prevent potential pitchpoling when sailing in high wind.



Installing the assembled Wing-seats onto the Boat:

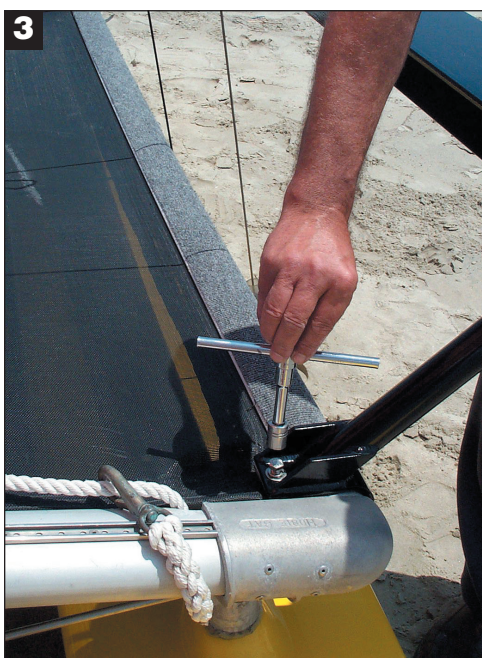
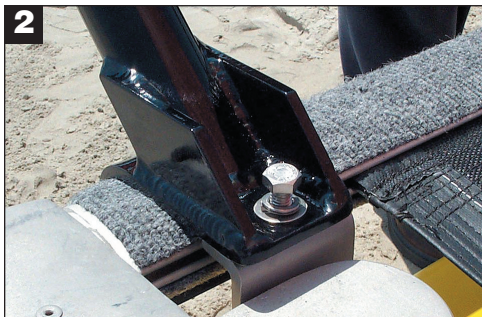
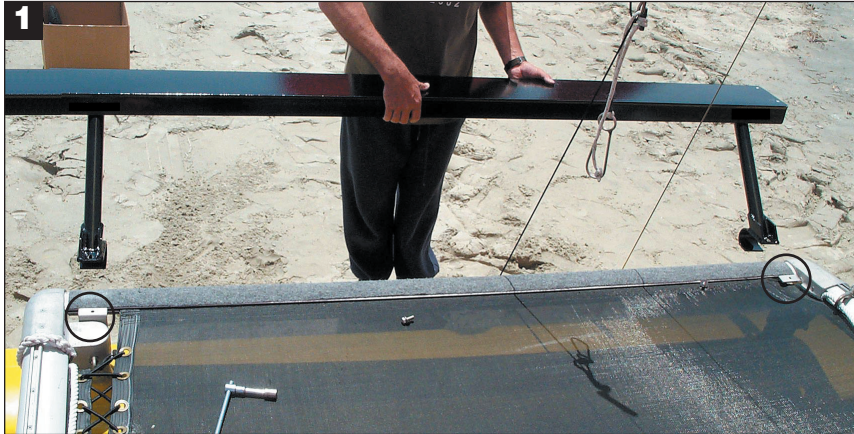
Step 1) Place the wing-seat arms onto the mounting brackets that you have previously installed. (Note the circles indicating the mounting brackets in figure 1.)

Step 2) Attach the wing-seat arms to each side of the trampoline frame using the 3/8 bolts, and washers. (See figure 2.)

(Note: If necessary, some minor adjustment may be required to line-up the Bench Arm hole with the Mounting Bracket hole before the 3/8 bolt can be inserted and tightened.)

Step 3) Tighten the 3/8 bolts to the mounting brackets.

Repeat steps 1-3 for the other side.



The “SitnSail” Wing Seats should resemble the above photo after installation is complete.

Wing Seat removal is the reverse of the above steps.

*Note: Only the Wing-seats need to be removed for storage or trailering of the boat. You should always leave the Mounting Bracket Hardware installed on the boat. This is true even if you want to go sailing without the Wing Seats.

***Do not exceed 375 lbs. per bench evenly distributed.**

